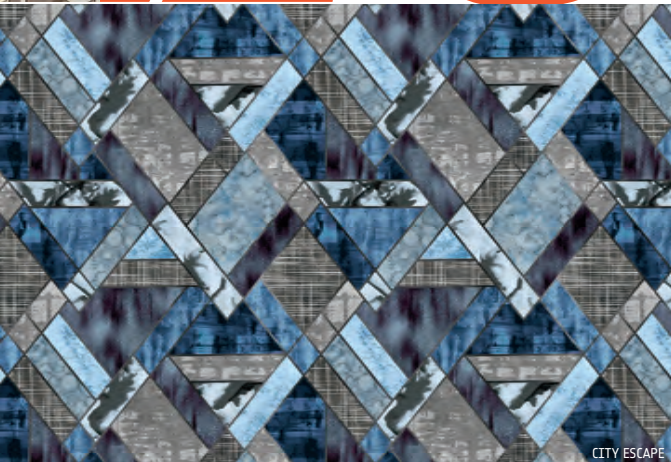
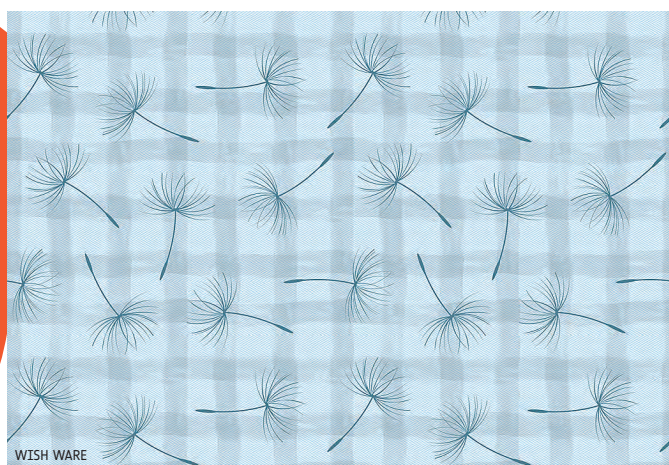


groundworks

Portraits of Abraham Lincoln by Hunt Slonem tile No. Sixteen, a nonwoven wall covering made of wood pulp, binder, mineral fillers, and polyester. A hallmark of the collection—the artist’s second for the manufacturer—is the lifelike brushwork texture, offering the illusion that the imagery is painted directly onto the wall. Other motifs in the series include Slonem’s stately rendition of Queen Elizabeth II and his signature gestural rabbits. leejofa.com



FABRIC&WALLcovering



lebatex To celebrate the big two-oh, Stacy Garcia’s LebaTex collaborated with 20 designers from top U.S. firms to create customizable patterns for its on-demand program. Highlights include Meri Meis’s ovular **Abstracture**; Jeffrey Beers’s angular **City Escape**; blocky **Quadrant Hill**, by Jeff Ornstein of J/Brice Design International; whimsical **Wish Ware**, by Donald Strum of Michael Graves Design; and vibrant **Deco**, by Lesley Hughes Wyman and Tamara Ainsworth of MatchLine Design Group. Each pattern can be digitally printed on polyester or cotton fabrics suitable for upholstery, drapery, or bedding, with no minimum yardage and the option to add acrylic or knit backing. lebatex.com ➔

